

LEGEND

- END STRUCTURE
- LIP-IN-LINE GULLY PIT
- FIELD INLET
- MAINTENANCE HOLE
- DRAINAGE PIPE
- BARRIER KERB AND CHANNEL - B1
- BARRIER KERB - B6
- BARRIER KERB - B2
- MOUNTABLE KERB AND CHANNEL - M1
- MOUNTABLE KERB - M5
- SEMI-MOUNTABLE KERB - SM3
- INVERT CHANNEL - INV900
- REMOVABLE BOLLARD
- SEDIMENT FOREBAY

Daniel Gibson ENGINEERS CERTIFICATION
 I hereby certify that:
 1. The information contained in this drawing / document is in compliance with approved drawings and design.
 2. This represents an accurate record of as-constructed works.
 3. I accept responsibility for the information contained in this drawing / document. In accepting this responsibility we have relied upon information provided by others.
 CERTIFICATION FOR HARMONY RELEASE 26A
 RPEQ Signature *[Signature]* RPEQ No. 23875 Date 30-01-2024
 For and on behalf of EGIS CONSULTING (QLD) PTY LTD.

I David Connell, being a Cadastral Surveyor and duly authorised representative of RPS AAP Consulting Pty Ltd.
 hereby certify that:
 • I certify the information contained in this drawing is an accurate "as-constructed" representation of the works.
 • I accept responsibility for the location of the "as-constructed" information contained in this drawing.
 • I acknowledge the "as-constructed" information contained in the drawing may be relied on by Council and others.
 Certification for Stages HARMONY RELEASE 26A by *[Signature]* on 29.01.2024 (stage no.) (date)
 for RPS AAP Consulting Pty Ltd.

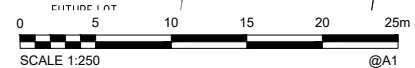
5 SP333894

SUGAR MILL ROAD
 SURFACE: 50mm AC
 BASE: 175mm GR21
 SUB BASE: 175mm GR23
 LOWER SUB BASE: 275mm GR25
 250mm SUBGRADE REPLACEMENT
 SUBGRADE CBR: 2

BOTANIC AVENUE CH 0-150
 SURFACE: 35mm AC
 BASE: 150mm GR21
 SUB BASE: 150mm GR23
 LOWER SUB BASE: 100mm GR25
 SUBGRADE CBR: 2

ROUNDABOUT
 SURFACE: 230mm AC
 BASE: 150mm GR21
 SUB BASE: 200mm GR23
 LOWER SUB BASE: 250mm GR25
 SUBGRADE CBR: 15

SUGAR MILL ROAD
 SURFACE: 50mm AC
 BASE: 175mm GR21
 SUB BASE: 175mm GR23
 LOWER SUB BASE: 275mm GR25
 250mm SUBGRADE REPLACEMENT
 SUBGRADE CBR: 2



AS CONSTRUCTED

PSM204913
 E: 505792.285
 N: 704164.1909
 RL: 11.093m

A1	0	24/10/2023	AS-CONSTRUCTED DETAILS	LG	BS
	INDEX	DATE	REVISIONS	DRAWN	CHECKED

DRAWN	LG	24/10/2023
CHECKED	BS	24/10/2023
PASSED		
INITIALS	DATE	



SUNSHINE COAST COUNCIL
 ROADS AND DRAINAGE
 HARMONY - RELEASE 26A
 COUNCIL REFERENCE: OPW22/0087.01

SCALE	1:250
SHEET	1 OF 5 SHEETS
DRAWING NO.	-

I, David Connell, being a Cadastral Surveyor and duly authorised representative of RPS AAP Consulting Pty Ltd.
 hereby certify that the information contained in this drawing is an accurate "as-constructed" representation of the works.
 I accept responsibility for the location of the "as-constructed" information contained in this drawing.
 I acknowledge the "as-constructed" information contained in the drawing may be relied on by Council and others.

Certification for Stages (stage no) by Signature on 29.01.2024 (date)
 HARMONY RELEASE 26A
 For RPS AAP Consulting Pty Ltd.



- LEGEND**
- END STRUCTURE
 - LIP-IN-LINE GULLY PIT
 - FIELD INLET
 - MAINTENANCE HOLE
 - DRAINAGE PIPE
 - BARRIER KERB AND CHANNEL - B1
 - BARRIER KERB - B6
 - BARRIER KERB - B2
 - MOUNTABLE KERB AND CHANNEL - M1
 - MOUNTABLE KERB - M5
 - SEMI-MOUNTABLE KERB - SM3
 - INVERT CHANNEL - INV900
 - REMOVABLE BOLLARD
 - SEDIMENT FOREBAY

PSM204913
 E: 505792.285
 N: 704164.1909
 RL: 11.093m

ENGINEERS CERTIFICATION
 Daniel Gibson hereby certify that:
 1. The information contained in this drawing / document is in compliance with approved drawings and design.
 2. This represents an accurate record of as-constructed works.
 3. I accept responsibility for the information contained in this drawing / document. In accepting this responsibility we have relied upon information provided by others.

CERTIFICATION FOR HARMONY RELEASE 26A

RPEQ Signature RPEQ No. 23875 Date 30-01-2024
 For and on behalf of EGIS CONSULTING (QLD) PTY LTD.

SCALE 1:250 @A1
AS CONSTRUCTED

A1	0	24/10/2023	AS-CONSTRUCTED DETAILS	LG	BS
	INDEX	DATE	REVISIONS	DRAWN	CHECKED

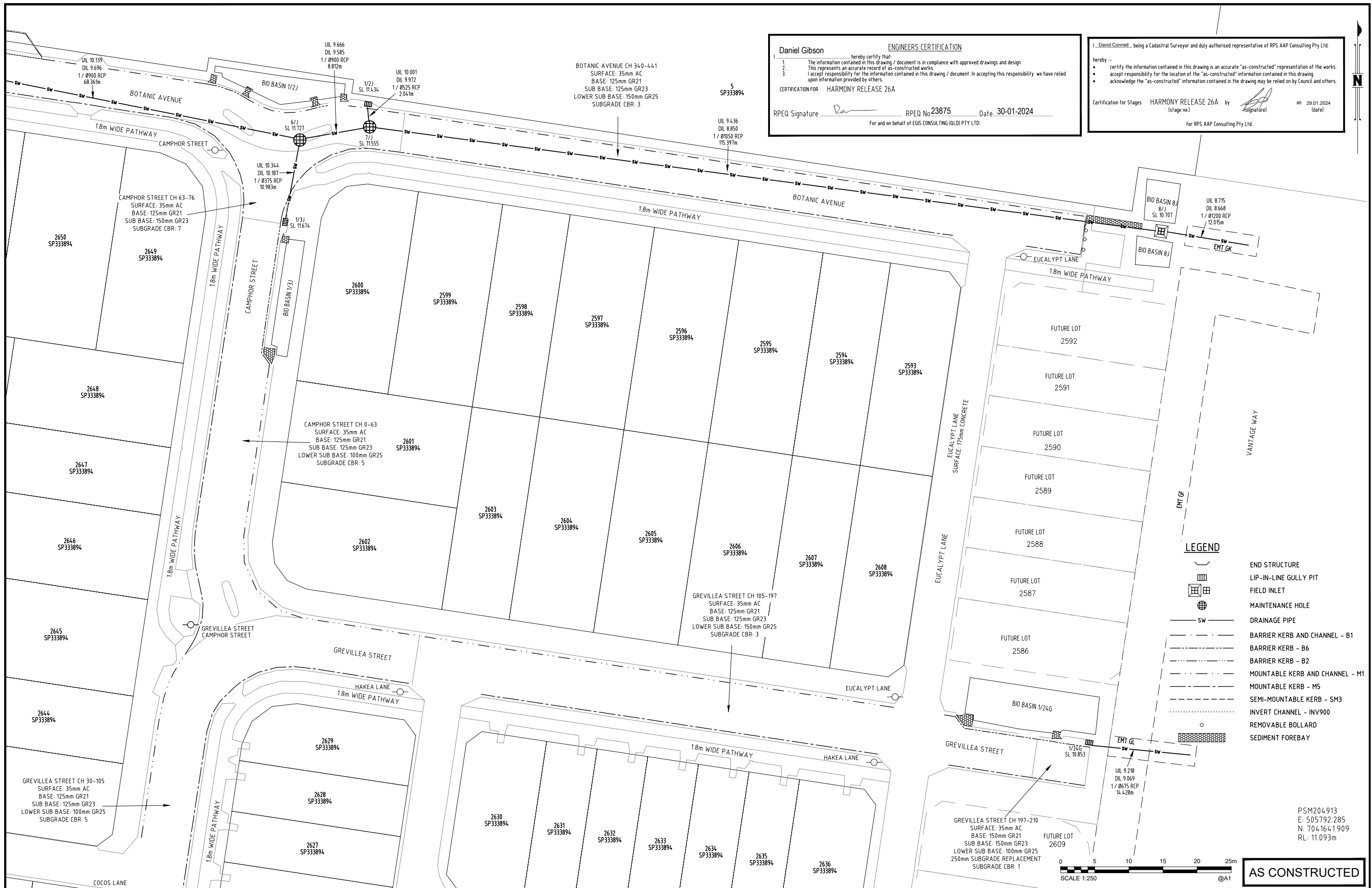
DRAWN	LG	24/10/2023
CHECKED	BS	24/10/2023
PASSED		
INITIALS		DATE

EGIS CONSULTING Pty Ltd
 Level 4, Unit 401, 8 Market Lane,
 Maroochydore, QLD 4558
 Telephone 07 5314 2520
 Facsimile 07 5314 2522

Sunshine Coast COUNCIL

SUNSHINE COAST COUNCIL
 ROADS AND DRAINAGE
 HARMONY - RELEASE 26A
 COUNCIL REFERENCE: OPW22/0087.01

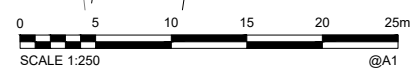
SCALE	1:250
SHEET 2	OF 5 SHEETS
DRAWING NO.	-



Daniel Gibson ENGINEERS CERTIFICATION
 I hereby certify that:
 1. The information contained in this drawing / document is in compliance with approved drawings and design.
 2. This represents an accurate record of as-constructed works.
 3. I accept responsibility for the information contained in this drawing / document. In accepting this responsibility we have relied upon information provided by others.
 CERTIFICATION FOR HARMONY RELEASE 26A
 RPEQ Signature: [Signature] RPEQ No. 23875 Date: 30-01-2024
 For and on behalf of EGIS CONSULTING (QLD) PTY LTD.

I, David Connell, being a Cadastral Surveyor and duly authorised representative of RPS AAP Consulting Pty Ltd.
 hereby certify:
 • I certify the information contained in this drawing is an accurate "as-constructed" representation of the works.
 • I accept responsibility for the location of the "as-constructed" information contained in this drawing.
 • I acknowledge the "as-constructed" information contained in the drawing may be relied on by Council and others.
 Certification for Stages HARMONY RELEASE 26A by [Signature] on 29.01.2024 (stage no.) (date)
 for RPS AAP Consulting Pty Ltd.

- LEGEND**
- END STRUCTURE
 - LIP-IN-LINE GULLY PIT
 - FIELD INLET
 - MAINTENANCE HOLE
 - DRAINAGE PIPE
 - BARRIER KERB AND CHANNEL - B1
 - BARRIER KERB - B6
 - BARRIER KERB - B2
 - MOUNTABLE KERB AND CHANNEL - M1
 - MOUNTABLE KERB - M5
 - SEMI-MOUNTABLE KERB - SM3
 - INVERT CHANNEL - INV900
 - REMOVABLE BOLLARD
 - SEDIMENT FOREBAY



AS CONSTRUCTED

PSM204913
 E: 505792.285
 N: 7041641.909
 RL: 11.093m

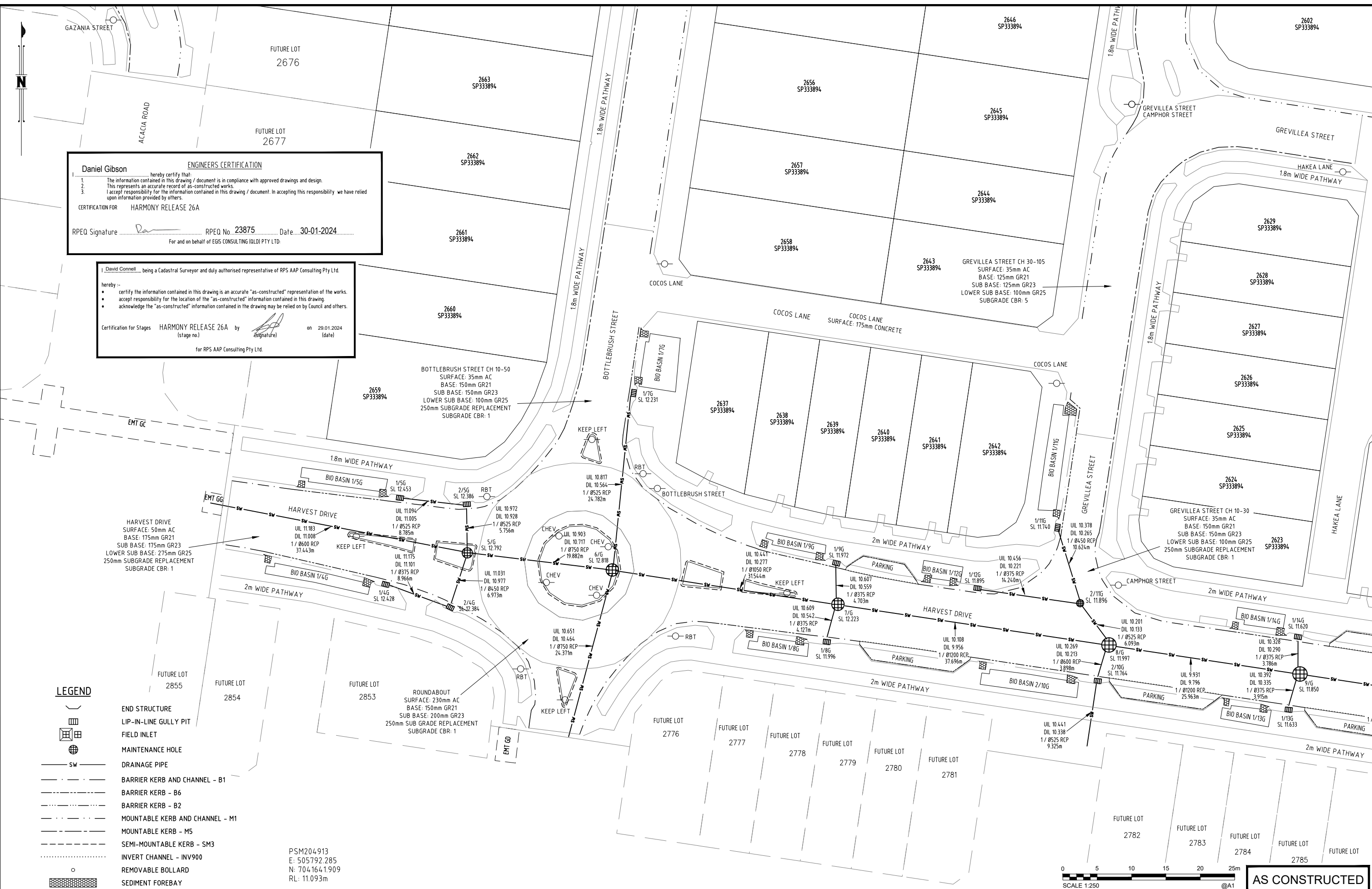
A1	0	24/10/2023	AS-CONSTRUCTED DETAILS	LG	BS	
	INDEX	DATE	REVISIONS	DRAWN	CHECKED	PASSED

DRAWN	LG	24/10/2023
CHECKED	BS	24/10/2023
PASSED		
INITIALS	DATE	



SUNSHINE COAST COUNCIL
 ROADS AND DRAINAGE
 HARMONY - RELEASE 26A
 COUNCIL REFERENCE: OPW22/0087.01

SCALE	1:250
SHEET	3 OF 5 SHEETS
DRAWING NO.	



ENGINEERS CERTIFICATION
 Daniel Gibson hereby certify that:
 1. The information contained in this drawing / document is in compliance with approved drawings and design.
 2. This represents an accurate record of as-constructed works.
 3. I accept responsibility for the information contained in this drawing / document. In accepting this responsibility we have relied upon information provided by others.
 CERTIFICATION FOR HARMONY RELEASE 26A
 RPEQ Signature: [Signature] RPEQ No. 23875 Date: 30-01-2024
 For and on behalf of EGIS CONSULTING (QLD) PTY LTD.

David Connell being a Cadastral Surveyor and duly authorised representative of RPS AAP Consulting Pty Ltd.
 hereby -
 • certify the information contained in this drawing is an accurate "as-constructed" representation of the works.
 • accept responsibility for the location of the "as-constructed" information contained in this drawing.
 • acknowledge the "as-constructed" information contained in the drawing may be relied on by Council and others.
 Certification for Stages HARMONY RELEASE 26A by [Signature] on 29.01.2024 (stage no.) (date)
 for RPS AAP Consulting Pty Ltd.

- LEGEND**
- END STRUCTURE
 - LIP-IN-LINE GULLY PIT
 - FIELD INLET
 - MAINTENANCE HOLE
 - DRAINAGE PIPE
 - BARRIER KERB AND CHANNEL - B1
 - BARRIER KERB - B6
 - BARRIER KERB - B2
 - MOUNTABLE KERB AND CHANNEL - M1
 - MOUNTABLE KERB - M5
 - SEMI-MOUNTABLE KERB - SM3
 - INVERT CHANNEL - INV900
 - REMOVABLE BOLLARD
 - SEDIMENT FOREBAY

PSM204913
 E: 505792.285
 N: 704164.1909
 RL: 11.093m

SCALE 1:250
 @A1

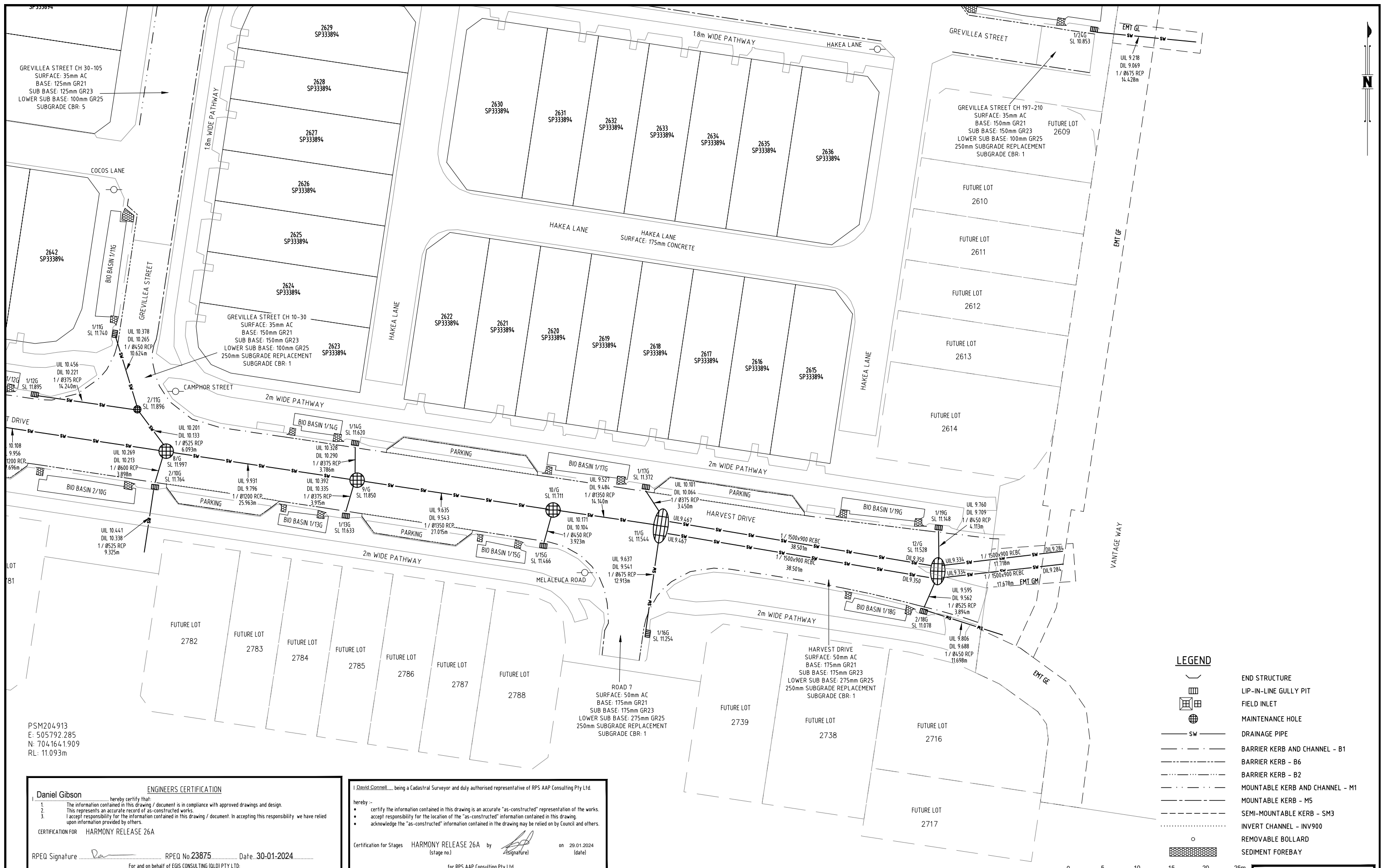
AS CONSTRUCTED

A1	0	24/10/2023	AS-CONSTRUCTED DETAILS	LG	BS	
	INDEX	DATE	REVISIONS	DRAWN	CHECKED	PASSED

DRAWN	LG	24/10/2023
CHECKED	BS	24/10/2023
PASSED		
INITIALS	DATE	



SUNSHINE COAST COUNCIL		SCALE 1:250
ROADS AND DRAINAGE HARMONY - RELEASE 26A COUNCIL REFERENCE: OPW22/0087.01		SHEET 4 OF 5 SHEETS
		DRAWING NO.



PSM204913
 E: 505792.285
 N: 704164.1909
 RL: 11.093m

ENGINEERS CERTIFICATION
 Daniel Gibson hereby certifies that:
 1. The information contained in this drawing / document is in compliance with approved drawings and design.
 2. This represents an accurate record of as-constructed works.
 3. I accept responsibility for the information contained in this drawing / document. In accepting this responsibility we have relied upon information provided by others.
 CERTIFICATION FOR HARMONY RELEASE 26A
 RPEQ Signature: [Signature] RPEQ No 23875 Date: 30-01-2024
 For and on behalf of EGS CONSULTING (QLD) PTY LTD

I, David Connell, being a Cadastral Surveyor and duly authorised representative of RPS AAP Consulting Pty Ltd.
 hereby -
 • certify the information contained in this drawing is an accurate "as-constructed" representation of the works.
 • accept responsibility for the location of the "as-constructed" information contained in this drawing.
 • acknowledge the "as-constructed" information contained in the drawing may be relied on by Council and others.
 Certification for Stages HARMONY RELEASE 26A by [Signature] on 29.01.2024 (stage no.) (date)
 for RPS AAP Consulting Pty Ltd.

LEGEND

- END STRUCTURE
- LIP-IN-LINE GULLY PIT
- FIELD INLET
- MAINTENANCE HOLE
- DRAINAGE PIPE
- BARRIER KERB AND CHANNEL - B1
- BARRIER KERB - B6
- BARRIER KERB - B2
- MOUNTABLE KERB AND CHANNEL - M1
- MOUNTABLE KERB - M5
- SEMI-MOUNTABLE KERB - SM3
- INVERT CHANNEL - INV900
- REMOVABLE BOLLARD
- SEDIMENT FOREBAY

SCALE 1:250
 SCALE 1250
 SHEET 5 OF 5 SHEETS
 DRAWING NO. -

A1	0	24/10/2023	AS-CONSTRUCTED DETAILS	LG	BS	
	INDEX	DATE	REVISIONS	DRAWN	CHECKED	PASSED

egis
 EGIS CONSULTING Pty Ltd
 Level 4, Unit 401, 8 Market Lane,
 Maroochydore, QLD 4558
 Telephone 07 5314 2520
 Facsimile 07 5314 2522

Sunshine Coast COUNCIL

SUNSHINE COAST COUNCIL
 ROADS AND DRAINAGE
 HARMONY - RELEASE 26A
 COUNCIL REFERENCE: OPW22/0087.01

SCALE	1250
SHEET	5 OF 5 SHEETS
DRAWING NO.	-