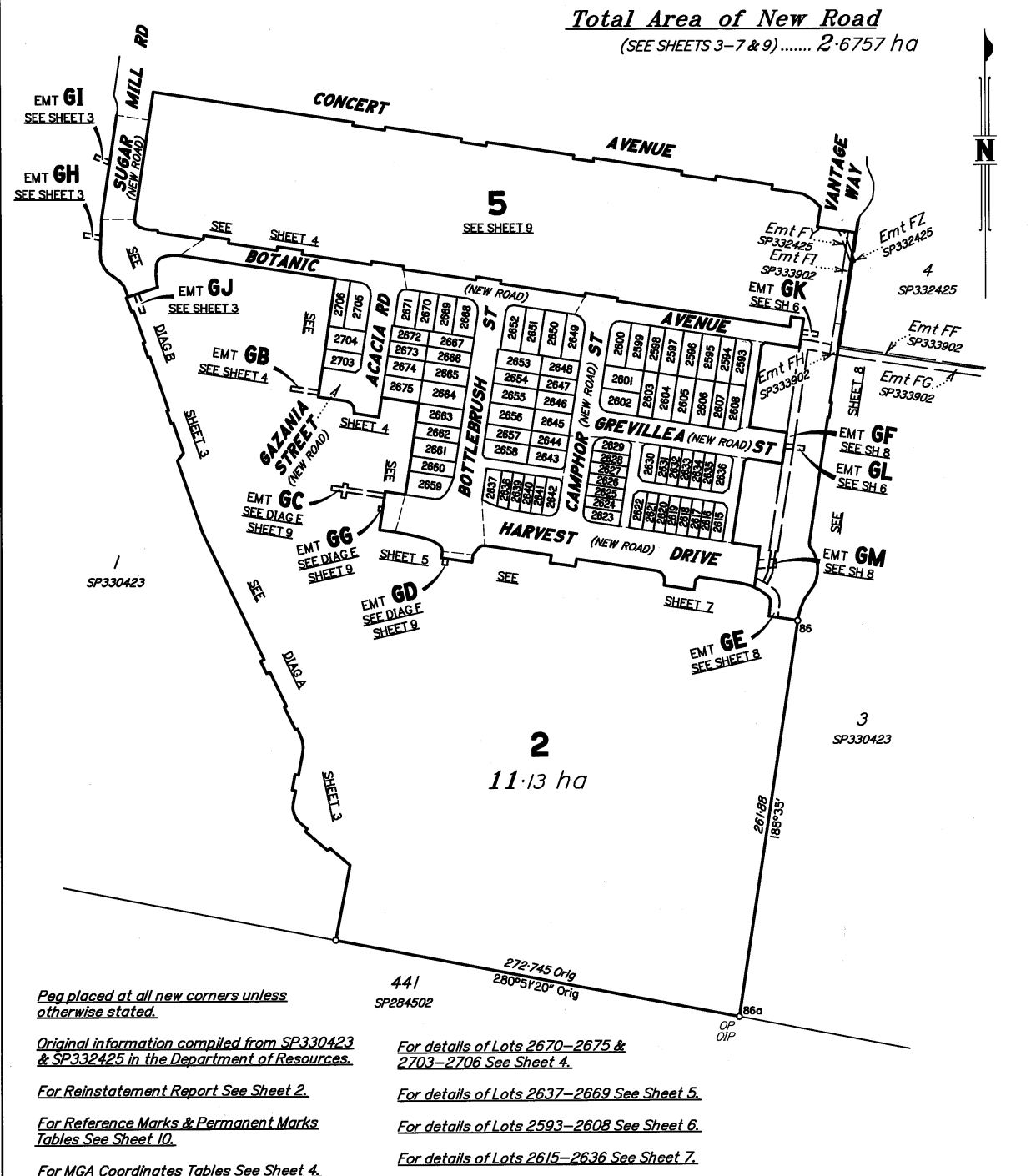


Land Title Act 1994; Land Act 1994  
Form 21 Version 4

SURVEY PLAN

Sheet 1 of 10



Peg placed at all new corners unless otherwise stated.

Original information compiled from SP330423 & SP332425 in the Department of Resources.

For Reinstatement Report See Sheet 2.

For Reference Marks & Permanent Marks Tables See Sheet 10.

For MGA Coordinates Tables See Sheet 4.

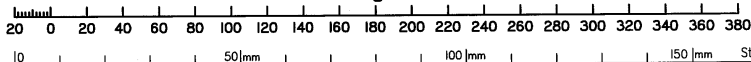
For details of Lots 2670-2675 & 2703-2706 See Sheet 4.

For details of Lots 2637-2669 See Sheet 5.

For details of Lots 2593-2608 See Sheet 6.

For details of Lots 2615-2636 See Sheet 7.

Scale 1:2500 - Lengths are in metres.



RPS AAP Consulting Pty Ltd (ACN 117 883 173) hereby certify that the land comprised in this plan was surveyed by the corporation, by Zachary Edward CRISPE, Surveying Associate, for whose work the corporation accepts responsibility, under the supervision of David John CONNELL, Cadastral Surveyor and that the plan is accurate, that the said survey was performed in accordance with the Survey and Mapping Infrastructure Act 2003 and Surveyors Act 2003 and associated Regulations and Standards and that the said survey was completed on 09.10.23

*[Signature]*  
Authorised Delegate

27.10.23  
Date

**Plan of Lots 2, 5, 2593-2608, 2615-2675 & 2703-2706 and Emts GB-GD, GG & GJ in Lot 2 & Emts GE, GF & GK-GM in Lot 5**

**Cancelling Lot 2 on SP330423 & Lot 5 on SP332425 and of Emts GH & GI in Lot 1 on SP330423**

LOCAL SUNSHINE COAST GOVERNMENT: REGIONAL COUNCIL LOCALITY: PALMVIEW

Meridian: MGA (Zone 56) Vide GNSS

Survey Records: No

Scale: 1:2500

Format: STANDARD



SP333894

**WARNING : Folded or Mutilated Plans will not be accepted.  
Plans may be rolled.  
Information may not be placed in the outer margins.**

**722899810**

EF 400 \$10,673.75  
23/11/2023 11:47:01 (Dealing No.)

4. Lodged by

(Include address, phone number, reference, and Lodger Code)

Existing		Created		
Title Reference	Description	New Lots	Road	Secondary Interests
51290952	Lot 2 on SP330423	2, 5, 2593-2608, 2615-2675 & 2703-2706	New Rd	Emts GB-GD, GG & GJ
51317804	Lot 5 on SP332425	5	New Rd	Emts GE, GF & GK-GM
51290951	Lot 1 on SP330423	-	-	Emts GH & GI

**MORTGAGE ALLOCATIONS**

Mortgage	Lots Fully Encumbered	Lots Partially Encumbered
716935593	2, 5, 2593-2608, 2615-2675 & 2703-2706	

**ENCUMBRANCE EASEMENT ALLOCATIONS**

Easement	Lots to be Encumbered
722033517 (Emts FH & FI on SP333902)	5
<b>722 474306</b> (Emt FY on SP332425)	5

**EXISTING ADMINISTRATIVE ADVICE ALLOCATIONS**

Administrative Advice	Lots to be Encumbered
710230220	2, 5, 2593-2608, 2615-2675 & 2703-2706

**REINSTATEMENT REPORT**

Plans Used: SP330417 (IS298535), SP330429 (IS298550), SP333902, SP332425 & SP330423

Purpose of the Survey: Multi lot subdivision

Meridian: MGA94 (Zone 56) vide NRTK Observations of OPM at Stn 1 & Peg at 89.

**Adopted Boundaries:**

- O Mks & O Ref Mks (Stns 1-5) along Sugar Mill Road vide SP330417/IS29853 & SP330423.
- OMks found along the southern boundary of Lot 5 vide SP330423 and
- O Mks/Ref Marks at Stns 6 (Sheet 8), 64a (Sheet 4) & 86a (Sheet 1, OP confirms corner; OIP incorrectly referenced in SP330423).

All new lots, easements and roads created in this plan, have been surveyed in the usual manner, with appropriate checks employed.

2, 5, 2593-2608, 2615-2675 & 2703-2706	Lot 345 on CP CG5011
Lots	Orig

2. Orig Grant Allocation :

3. References :

Dept File :  
Local Govt : POS23/0126  
Surveyor : AU004402-012 (PRI07461-56)

5. Passed & Endorsed :

By: RPS AAP CONSULTING PTY LTD  
ACN 117 883 173  
Date: 27.10.23  
Signed: *[Signature]*  
Designation : Cadastral Surveyor

**6. Building Format Plans only.**

I certify that :  
\* As far as it is practical to determine, no part of the building shown on this plan encroaches onto adjoining lots or road.  
\* Part of the building shown on this plan encroaches onto adjoining\* lots and road

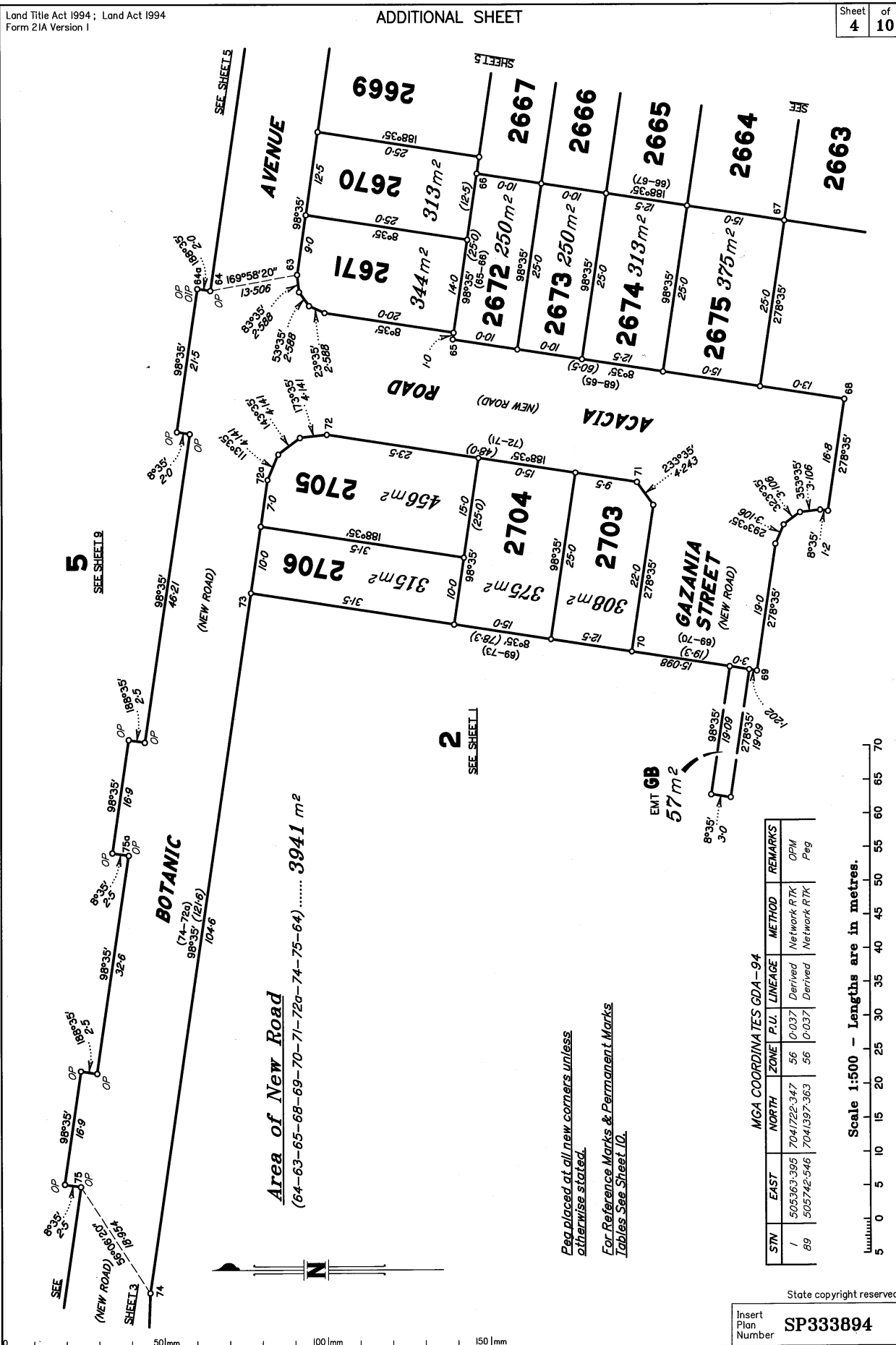
Cadastral Surveyor/Director\* Date  
\*delete words not required

**7. Lodgement Fees :**

Survey Deposit \$ .....  
Lodgement \$ .....  
..... New Titles \$ .....  
Photocopy \$ .....  
Postage \$ .....  
TOTAL \$ .....

8. Insert Plan Number **SP333894**





5  
SEE SHEET 8

2  
SEE SHEET 1

EMT GB  
57 m<sup>2</sup>

*Peg placed at all new corners unless otherwise stated.*  
*For Reference Marks & Permanent Marks Tables See Sheet 10.*

STN	MGA COORDINATES GDA-94		P.L.U.	LINEAGE	METHOD	REMARKS
	EAST	NORTH				
1	505363.395	7041722.347	56	0-037	Derived	Network RTK
89	505742.546	7041397.363	56	0-037	Derived	Network RTK

Scale 1:500 - Lengths are in metres.

State copyright reserved.

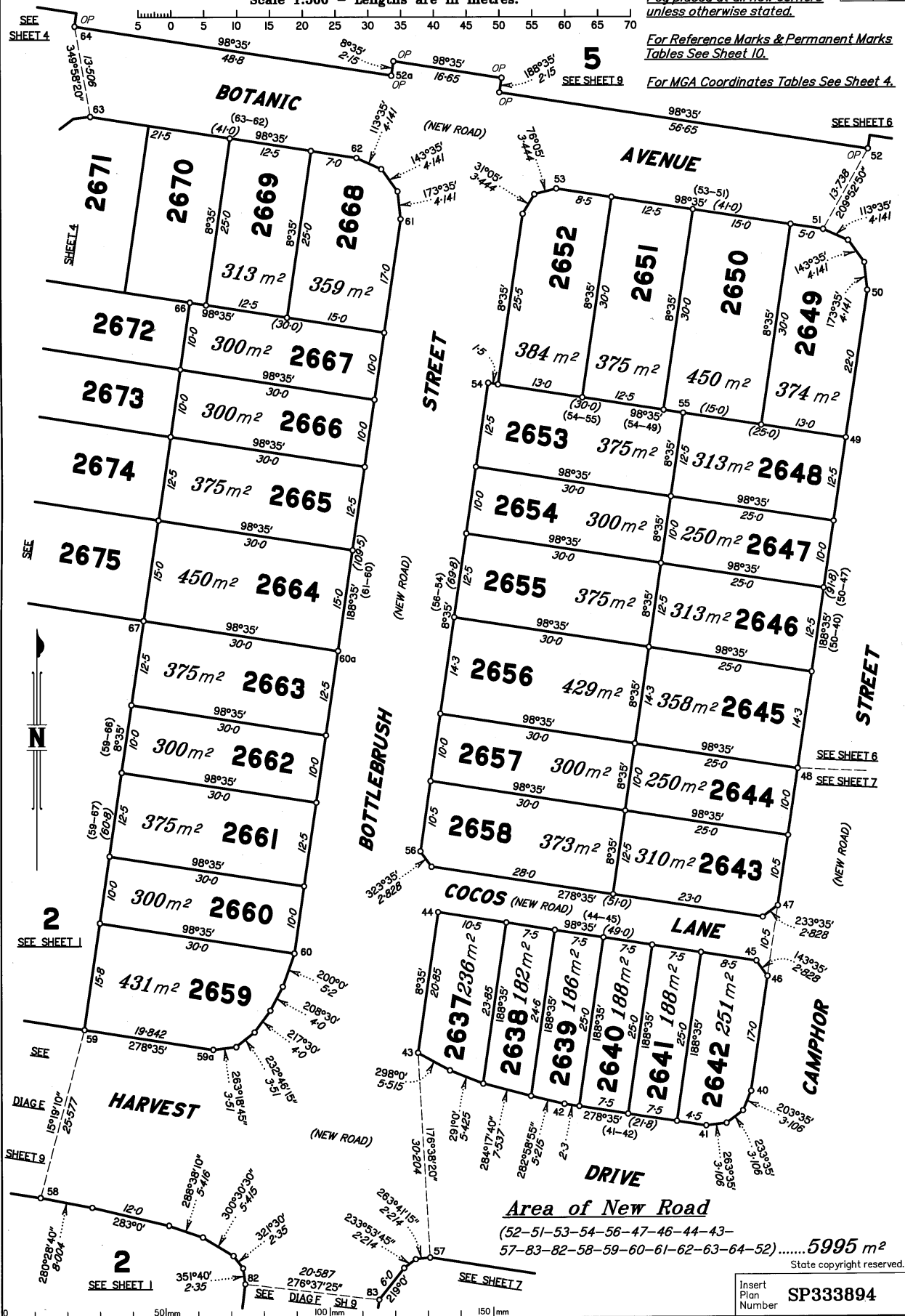
Insert Plan Number  
**SP333894**

Scale 1:500 - Lengths are in metres.

*Peg placed at all new corners unless otherwise stated.*

*For Reference Marks & Permanent Marks Tables See Sheet 10.*

*For MGA Coordinates Tables See Sheet 4.*



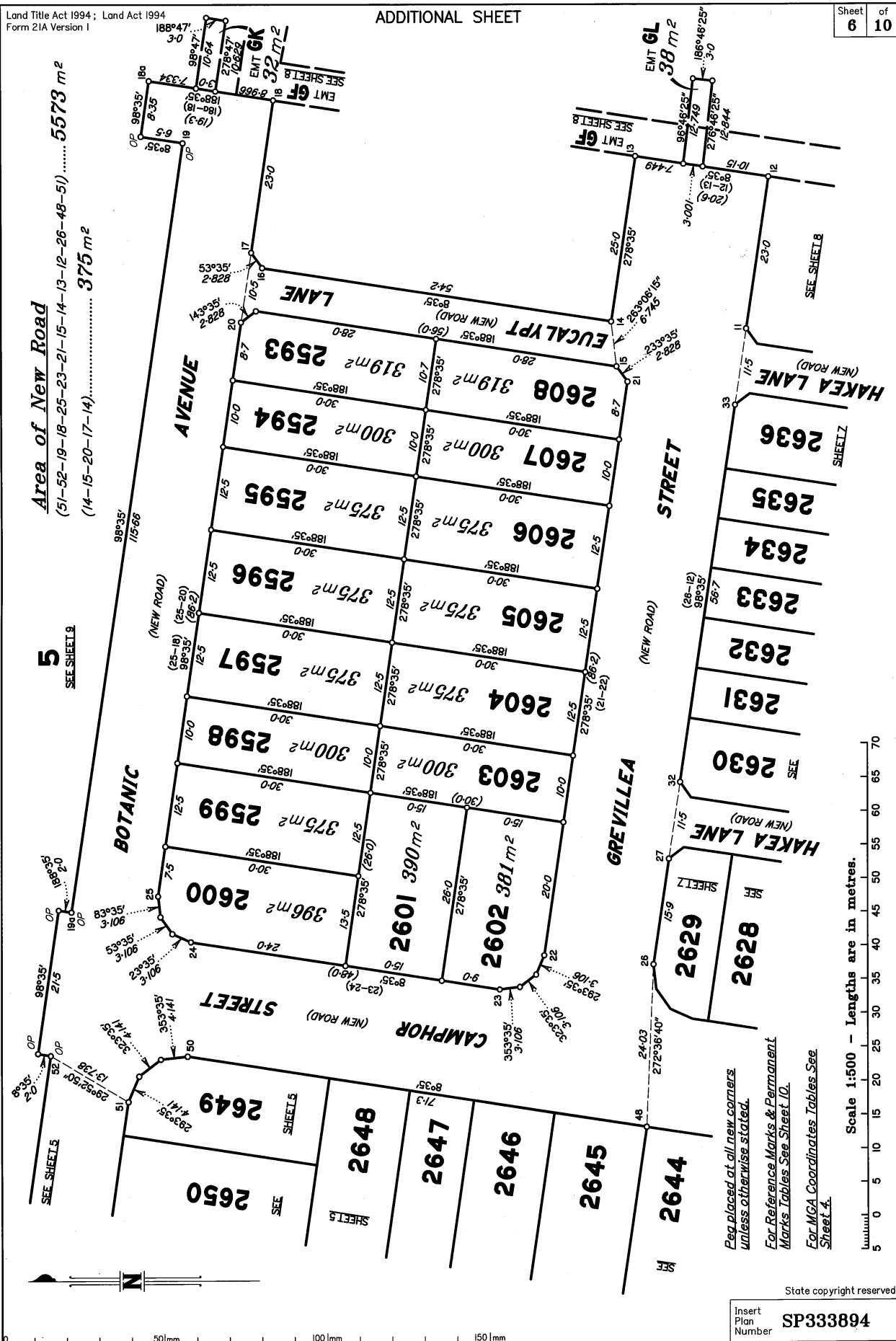
**Area of New Road**

(52-51-53-54-56-47-46-44-43-57-83-82-58-59-60-61-62-63-64-52).....5995 m<sup>2</sup>

State copyright reserved.

Insert Plan Number **SP333894**

**Area of New Road**  
(51-52-19-18-25-23-21-15-14-13-12-26-48-51) ..... 5573 m<sup>2</sup>  
(14-15-20-17-14) ..... 375 m<sup>2</sup>



**5**  
SEE SHEET 9

Rep placed at all new corners  
unless otherwise stated.  
For Reference Marks & Permanent  
Marks Tables See Sheet 10.  
For MGA Coordinates Tables See  
Sheet 4.

Scale 1:500 - Lengths are in metres.

State copyright reserved.

Insert Plan Number **SP333894**

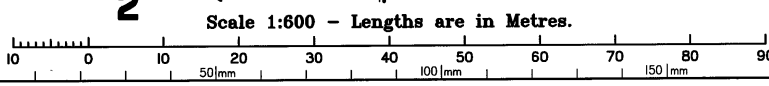
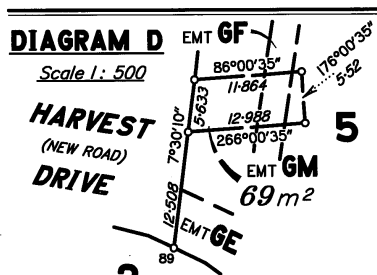
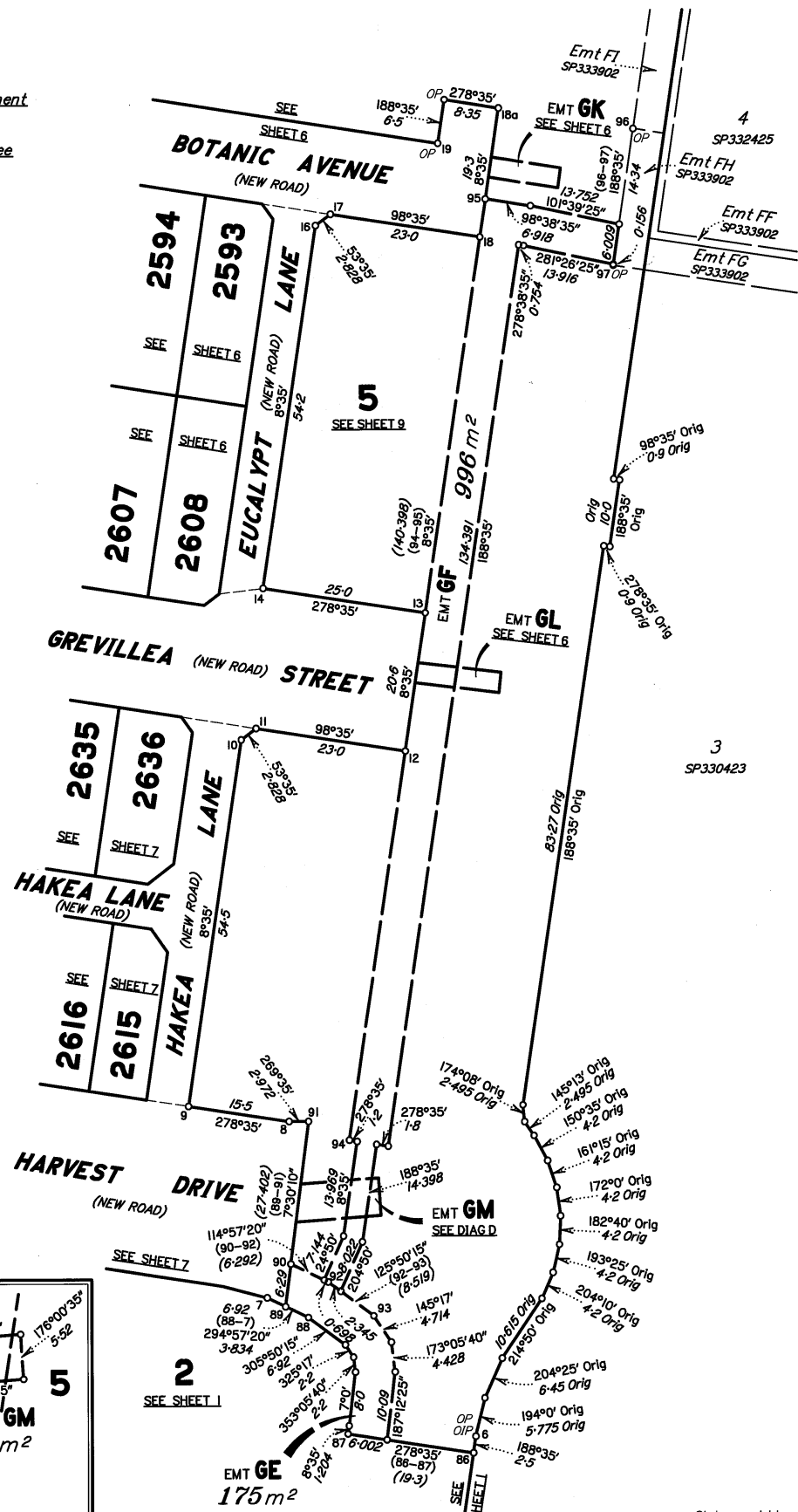


Peg placed at all new corners unless otherwise stated.

For Reference Marks & Permanent Marks Tables See Sheet 10.

For MGA Coordinates Tables See Sheet 4.

Original information compiled from SP330423 in the Department of Resources.



State copyright reserved.

Insert Plan Number **SP333894**





REFERENCE MARKS

STN	TO	BEARING	DIST	REMARKS
3	Screw in Kerb	196°30'	8-255	
4	OIP	279°41'10"	48-96	22/SP330423
5	O Screw in Kerb	8°21'30"	12-7	2/IS298535
5	OIP	8°42'	28-465	2/IS298535
6	OIP	73°45'	7-01	20/SP330423
6	Screw in Kerb	325°08'	7-265	
7	Screw in Manhole	293°52'	11-025	
7a	Screw in Kerb	97°47'30"	10-835	
7b	Screw in Manhole	62°16'	3-625	
9	Screw in Concrete	0°55'	5-185	
11	Screw in Concrete	332°0'	4-24	
12	Screw in Manhole	67°35'	2-72	
13	Pin	62°16'	0-08	
14	Screw in Concrete	194°16'	5-975	
17	Screw in Concrete	332°07'	4-285	
18	Screw in Manhole	50°30'	3-64	
18a	Pin	174°08'	1-845	
19a	Screw in Kerb	114°27'	5-245	
22	Pin	278°32'	5-79	
25	Screw in Kerb	292°0'	7-785	
26	Screw in Kerb	299°07'30"	7-765	
27	Screw in Concrete	45°03'	4-22	
29	Screw in Concrete	24°40'	2-25	
29a	Screw in Kerb	236°27'	8-89	
36	Screw in Concrete	253°26'	3-165	
37	Screw in Concrete	122°02'	2-74	
41	Pin	134°53'30"	8-29	
43	Screw in Manhole	150°37'	8-115	
44	Screw in Concrete	283°36'	6-095	
46	Screw in Concrete	48°17'30"	3-25	
48	Screw in Concrete	44°29'30"	12-415	
51	Screw in Manhole	75°04'	7-62	
52a	Screw in Kerb	202°36'	1-41	
53	Screw in Kerb	296°11'	8-415	
57	Screw in Kerb	280°35'30"	8-615	
59a	Pin	86°09'	6-215	
60a	Screw in Kerb	98°03'	5-075	
62	Pin	81°0'	9-26	
63	Screw in Kerb	291°53'	7-74	
64a	OIP	332°30'	5-35	23/SP330423
68	Screw in Kerb	337°07'	8-06	
69	Screw in Kerb	129°1'	5-12	
70	Pin	186°55'	3-485	
71	Screw in Kerb	170°44'30"	8-015	
72a	Screw in Kerb	86°38'	9-395	
74	Screw in Kerb	280°13'45"	16-345	
75a	Screw in Kerb	210°49'	1-495	
75a	Screw in Kerb	180°20'	7-765	
77	Screw in Kerb	352°29'	8-075	
78	Pin	11°29'	8-835	
80	Screw in Kerb	179°45'30"	7-585	
81	Pin	18°0'	6-075	
82	Screw in Kerb	16°57'30"	7-985	
86a	OIP (N&C)	23°43'30"	6-8	7/SP330423
88	Pin	98°10'30"	10-125	

PERMANENT MARKS

PM	BEARING	DIST	NO	REMARKS	TYPE
1-OPM	95°57'30"	19-05	201599	4/IS298535	Mini Mark

State copyright reserved.

Insert Plan Number  
**SP333894**