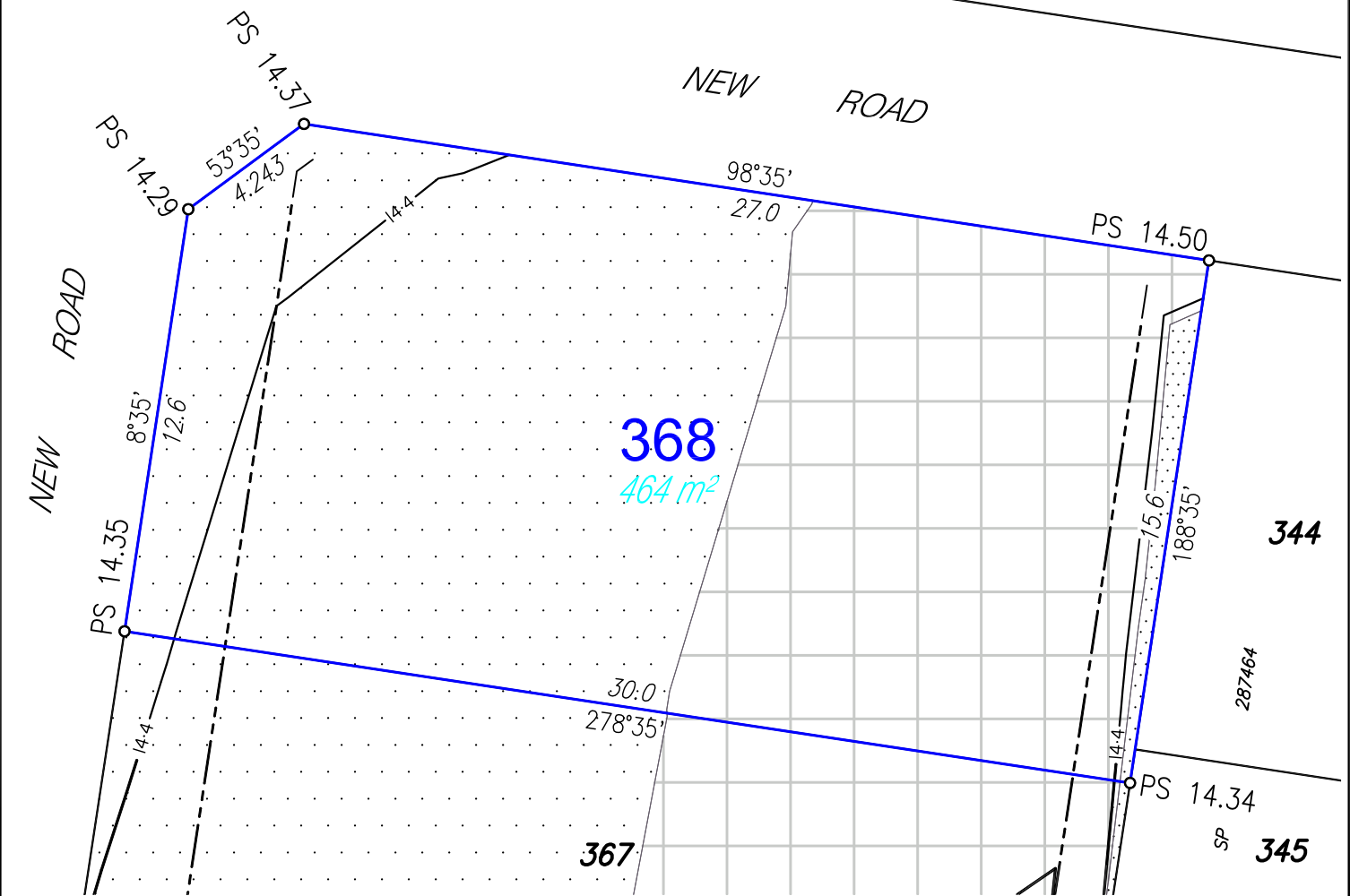


LEGEND

- Proposed Lot
- - - Proposed Easement
- Depth of Fill 0.0m-0.5m
- Depth of Fill 0.5m-1.0m
- Depth of Fill 1.0m-1.5m
- Depth of Fill 1.5m-2.0m
- Depth of Fill 2.0m-2.5m
- Depth of Fill 2.5m-3.0m
- PS X.XX Proposed Surface Levels
- - - Proposed Batter
- Final Surface Contour (0.2m interval)

- NOTES:**
- Areas and Dimensions are subject to survey plan registration.
 - Proposed contours, Fill & Final surface level information is as specified on Preliminary Design information prepared by Calibre Consulting Engineers (File: Tin Design DV2.12daz) received on 5/02/2019.
 - The compaction of the fill will be done in accordance with Australian Standard AS3798-2007 *Guidelines on earthworks for commercial and residential developments* to Level 1 inspection and testing and the frequency of field density testing will be in accordance with Table 8.1 of AS3798-2007.
 - Levels shown are referenced to the Australian Height Datum (AHD).
 - This plan was prepared to satisfy Section 11 of the Land Sales Act 1984.
 - Builders should not build off the design levels shown; a site survey is required.
 - These notes are an integral part of this plan.

Future Stage



Disclosure Plan

For Proposed Lot 368
Harmony - Release DV2
Currently Described as Part of Lot 9009
on SP308144
Locality: Palmview
Local Gov: S.C.R.C.

(to be shown on SP309506)

RPS Australia East Pty Ltd
ACN 140 292 762
ABN 44 140 292 762

1 Innovation Parkway, Birtinya, Qld, 4575
PO BOX 6149, Meridan Plains, Qld, 4551

T 07 5436 7888
F 07 5493 6630
W rpsgroup.com

© COPYRIGHT PROTECTS THIS PLAN
Unauthorised reproduction or amendment
not permitted. Please contact the author.

SCALE 1:200 IS APPLICABLE ONLY
TO THE ORIGINAL SHEET SIZE. (A4)

Drawn: MDB	Date: 8/02/2019
Dwg No: 107461-89.dwg	
Cadastral Surveyor: <i>ARC</i> (Authorised Delegate)	
Amended:	
Plan No: 107461-89 L368	Rev :