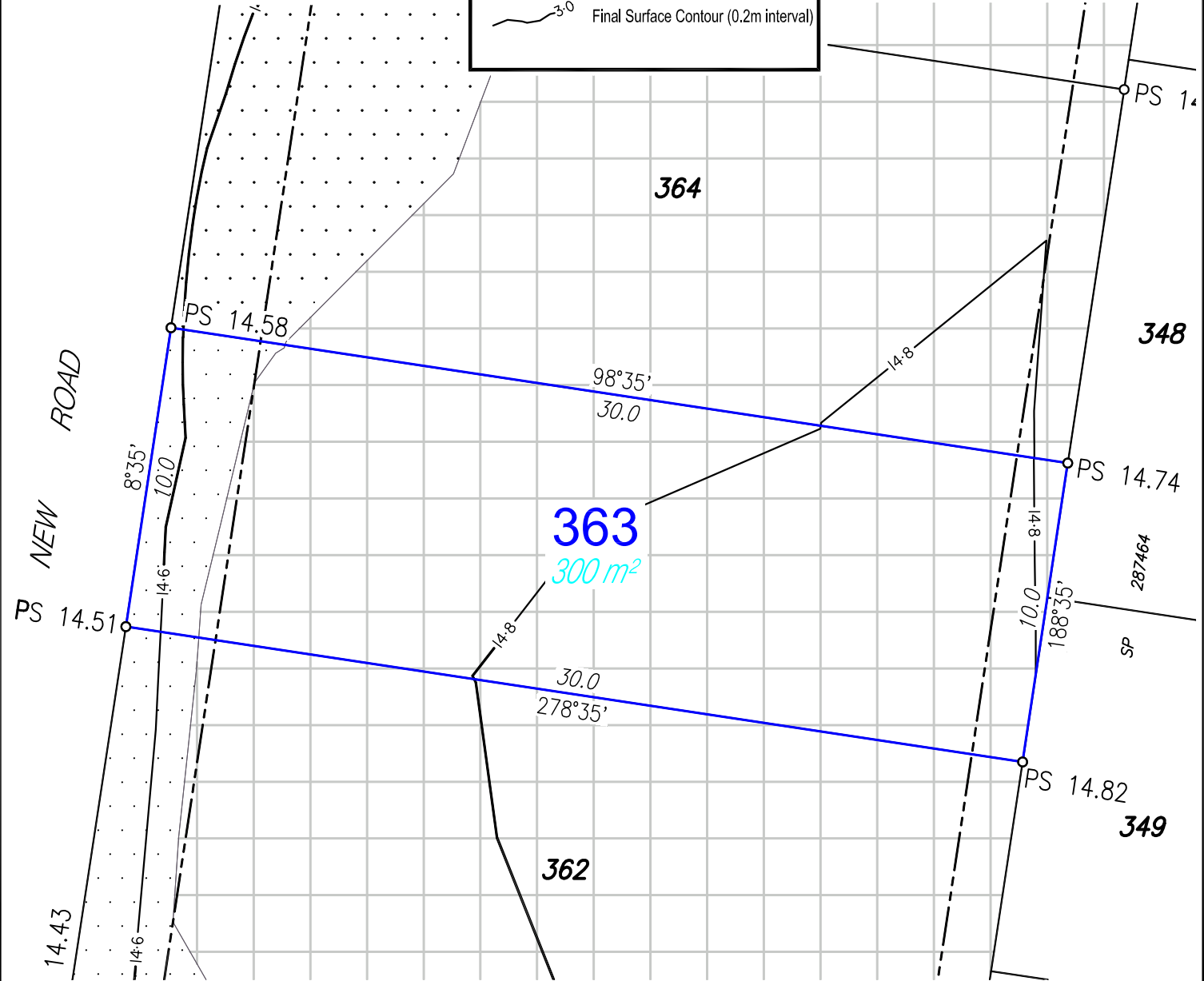



- NOTES:**
- Areas and Dimensions are subject to survey plan registration.
 - Proposed contours, Fill & Final surface level information is as specified on Preliminary Design information prepared by Calibre Consulting Engineers (File: Tin Design DV2.12daz) received on 5/02/2019.
 - The compaction of the fill will be done in accordance with Australian Standard AS3798-2007 *Guidelines on earthworks for commercial and residential developments* to Level 1 inspection and testing and the frequency of field density testing will be in accordance with Table 8.1 of AS3798-2007.
 - Levels shown are referenced to the Australian Height Datum (AHD).
 - This plan was prepared to satisfy Section 11 of the Land Sales Act 1984.
 - Builders should not build off the design levels shown; a site survey is required.
 - These notes are an integral part of this plan.



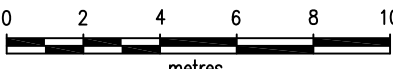
Disclosure Plan

For Proposed Lot 363
 Harmony - Release DV2
 Currently Described as Part of Lot 9009
 on SP308144
 Locality: Palmview
 Local Gov: S.C.R.C.
 (to be shown on SP309506)




RPS Australia East Pty Ltd
 ACN 140 292 762
 ABN 44 140 292 762
 1 Innovation Parkway, Birtinya, Qld, 4575
 PO BOX 6149, Meridan Plains, Qld, 4551
 T 07 5436 7888
 F 07 5493 6630
 W rpsgroup.com

© COPYRIGHT PROTECTS THIS PLAN
 Unauthorised reproduction or amendment
 not permitted. Please contact the author.



SCALE 1:200 IS APPLICABLE ONLY
 TO THE ORIGINAL SHEET SIZE. (A4)



Drawn: MDB	Date: 8/02/2019
Dwg No: 107461-89.dwg	
Cadastral Surveyor : <i>ARC</i> (Authorised Delegate)	
Amended:	
Plan No: 107461-89 L363	Rev :